



# Level of Development and 3D-10D BIM

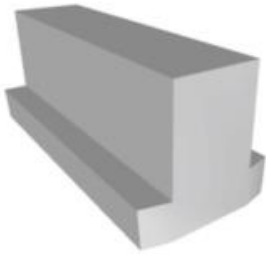
Ariana.kubart@ocellus.se



## Learning outcomes

- At the end of this lecture, the learner is expected to be able to
  - Explain role of different Levels of Development in BIM
  - Name diverse kinds of information which can be provided by BIM

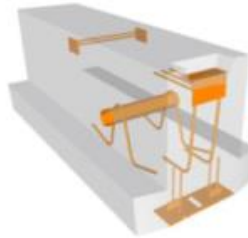
## Level of Development in BIM



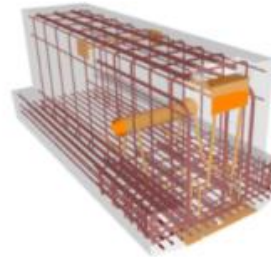
LOD 200



LOD 300



LOD 350



LOD 400

<https://i1.wp.com/revitig.com/wp-content/uploads/2021/07/image3.png?resize=768%2C283&ssl=1>

LoD – Level of Development, or even Level of Detail

Describes not only geometric features, but all BIM content for each element

## LoD Levels

LOD levels usually increase during the BIM process:

LOD 100 - Concept Design

LOD 200 - Schematic Design

LOD 300 - Detailed Design

LOD 350 - Construction

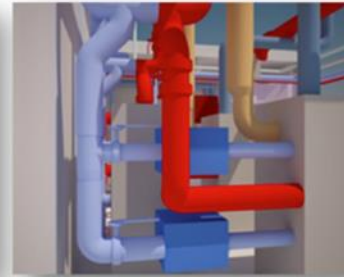
Documentation

LOD 400 - Fabrication & Assembly

LOD 500 - As-Built



**LOD 200**



**LOD 300**



**LOD 350**



**LOD 400**



**LOD 500**

A piping project at various LOD (Levels of Development) levels

Source: <https://lanmarservices.com/2014/05/14/loD-in-scan-to-bim/>

## LoD Level - example

LoD for a chair:

LOD 100 = there is a chair

LOD 200 = a chair with space  
requirement

LOD 300 = a chair with arm  
rests and wheels

LOD 400 = manufacturer and  
model number

LOD 500 = manufacturer and  
model number, supplier,  
date purchased

LOD 100

(Only data in **red** is useable)



Concept (Presentation)

**DESCRIPTION:**

**Office Chair**  
Arms, Wheels  
**WIDTH:**

**DEPTH:**

**HEIGHT:**

**MANUFACTURER:**

Hermann Miller  
**MODEL:**

Mirra  
**LOD:**  
**100**

LOD 200



Design Development

**DESCRIPTION:**

**Office Chair**  
Arms, Wheels  
**WIDTH:**

**DEPTH:**

**HEIGHT:**

**MANUFACTURER:**

Hermann Miller  
**MODEL:**

Mirra  
**LOD:**  
**200**

LOD 300



Documentation

**DESCRIPTION:**

**Office Chair**  
Arms, Wheels  
**WIDTH:**

**DEPTH:**

**HEIGHT:**

**MANUFACTURER:**

Hermann Miller  
**MODEL:**

Mirra  
**LOD:**  
**300**

LOD 400



Construction

**DESCRIPTION:**

**Office Chair**  
Arms, Wheels  
**WIDTH:**

**DEPTH:**

**HEIGHT:**

**MANUFACTURER:**

Hermann Miller  
**MODEL:**

Mirra  
**LOD:**  
**400**

LOD 500



Facilities Management

**DESCRIPTION:**

**Office Chair**  
Arms, Wheels  
**WIDTH:**

**DEPTH:**

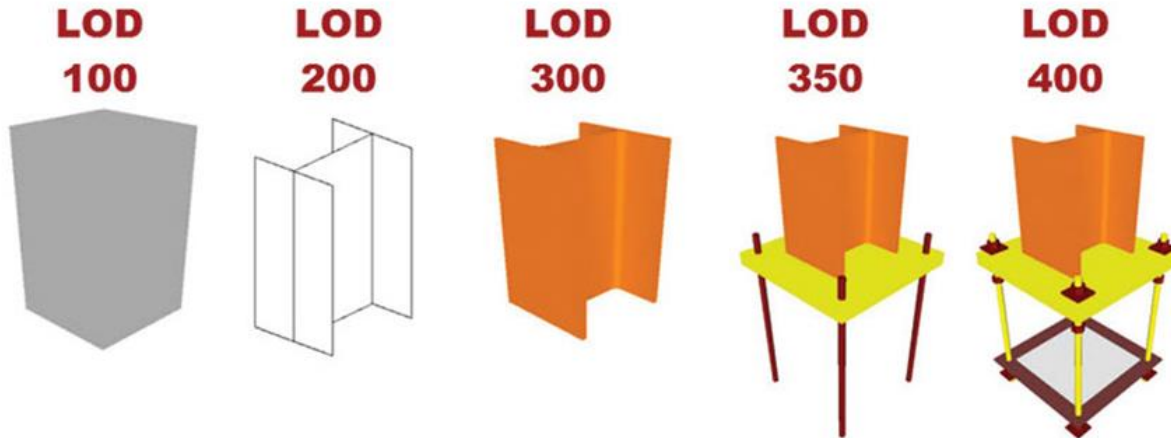
**HEIGHT:**

**MANUFACTURER:**

Hermann Miller  
**MODEL:**

Mirra  
**PURCHASE DATE:**  
**01/07/2015**

## Diverse LoD in the same model



[BIMForum Original Content – BIM Forum](#)

- LoD is a measure of progress in %
- LOD 500 is 100%, then LOD 100 = 20%, LOD 200 = 40% etc.
- At any stage the model will contain elements in diverse LoDs



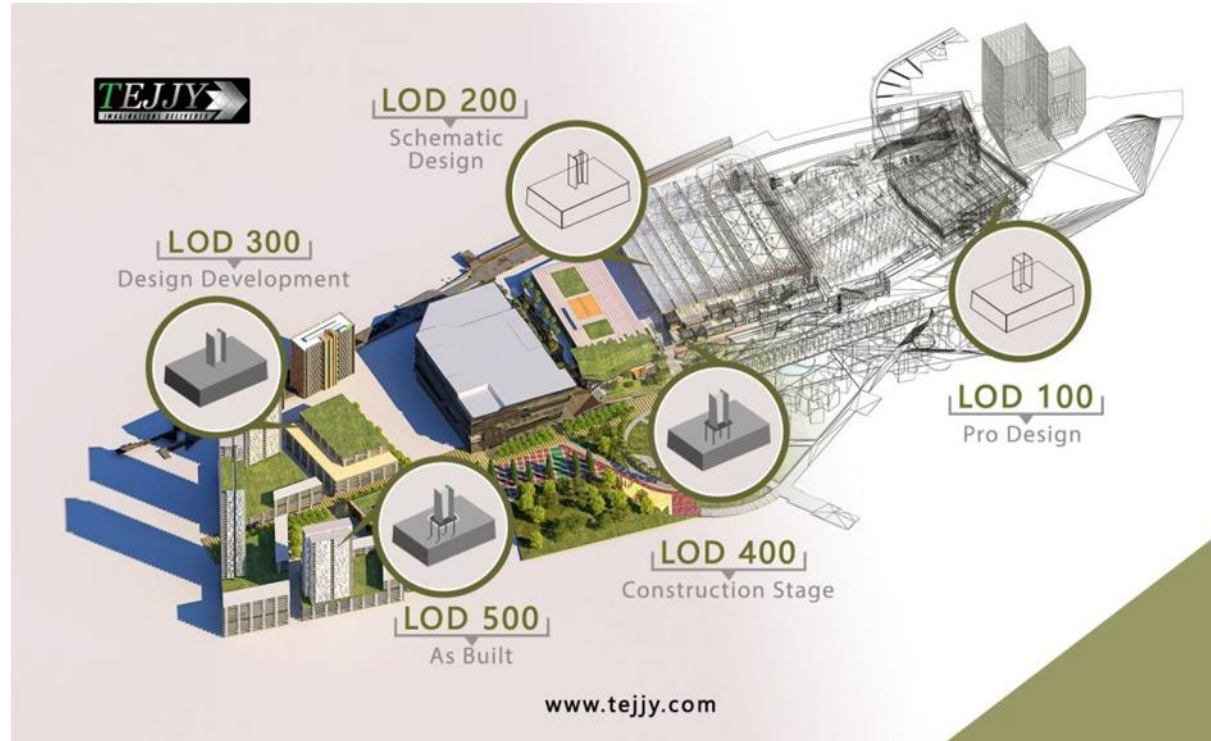
## LoD in Building Lifecycle

Different needs for BIM information during building lifecycle

= different BIM models in time

In reality, not always done until LoD 500

Though, LoD 500 BIM model for Facility Management is highly important



<https://www.tejyy.com/wp-content/uploads/2021/11/Level-of-Development-LOD-Tejyy-Inc-1-1024x627.jpg>



## BIM Dimensions 3D – 10D

BIM model = not only 3D geometry,  
even properties and much of additional  
information

Analysis for multiple purposes can be  
done

These analyses:

- increases the value of the data (not possible in CAD)
- can be performed already in design phase = clear picture and less error in early stages



## BIM Dimensions II



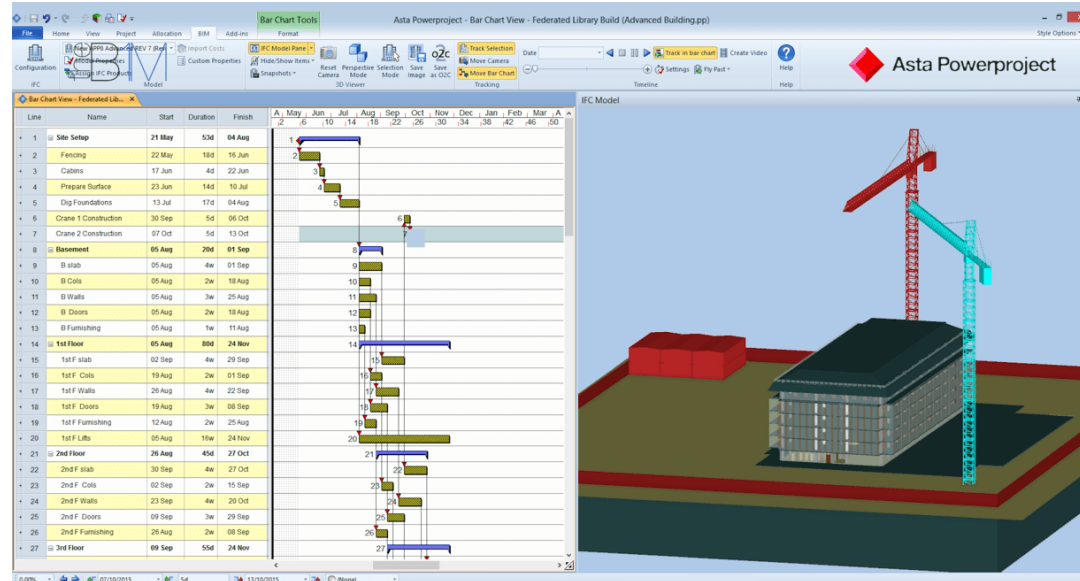
## 3D and 4D BIM modelling

### 3D

- the first step
- geometry enriched with properties

### 4D

- time schedule and simulations
- sequence and duration of activities
- visualisation of the construction for stakeholders



[https://www.theb1m.com/assets/images/Asta+Powerproject+\(4D+BIM\)+on+The+B1M.png?Action=thumbnail&algorithm=fill\\_proportional&width=754](https://www.theb1m.com/assets/images/Asta+Powerproject+(4D+BIM)+on+The+B1M.png?Action=thumbnail&algorithm=fill_proportional&width=754)

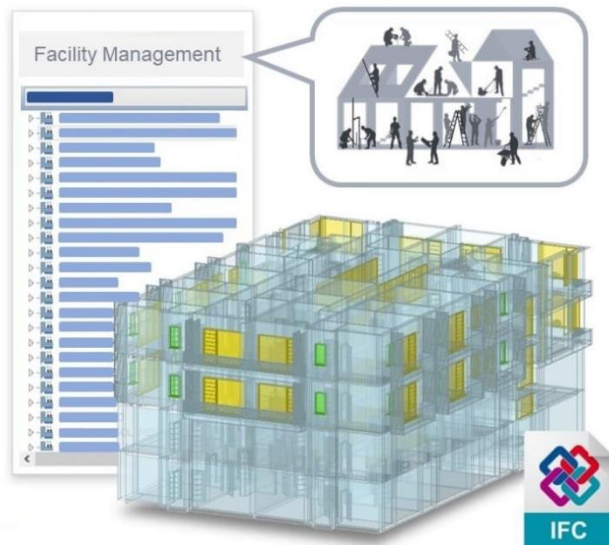


## 6D – 8D BIM

6D sustainability

7D facility management

8D health and safety



Up: <https://biblus.accasoftware.com/ptb/wp-content/uploads/sites/5/2021/11/BIM-6D-e-sustentabilidade.jpg>

Left: <https://biblus.accasoftware.com/fr/wp-content/uploads/sites/4/2021/11/BIM-7D-gestion-entretien-actifs-installations-usBIM.jpg>

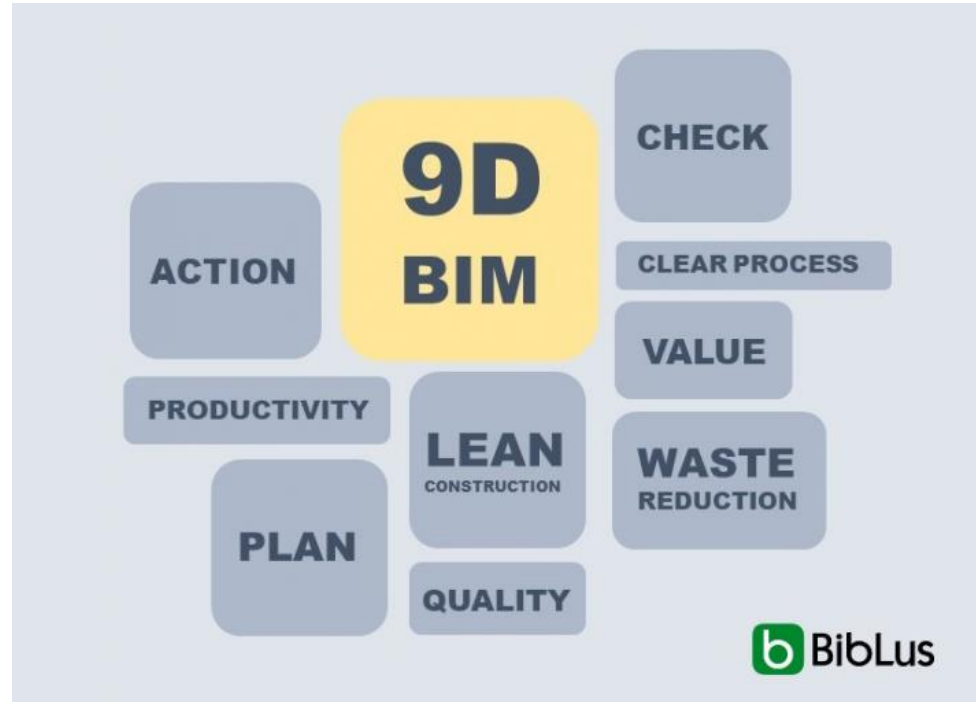
## 9D – 10D BIM

### 9D

- Lean construction
- Project management
- Construction simulations

### 10D

- Construction industrialisation
- Supply chain management
- Lifecycle & digital twin



[Dimensions-BIM-9D-lean-construction-usBIM-705x512.jpg  
\(705x512\) \(accasoftware.com\)](https://accasoftware.com/BIM-705x512.jpg)



**Thank you for your attention**



<https://birgitproject.eu/>

*Funded by the European Union. Views and opinions expressed are however those of the author(s) only and do not necessarily reflect those of the European Union or the European Education and Culture Executive Agency (EACEA). Neither the European Union nor EACEA can be held responsible for them.*